



Penny Thoso
0725645759
penny@csisales.co.za

Contact Head Office

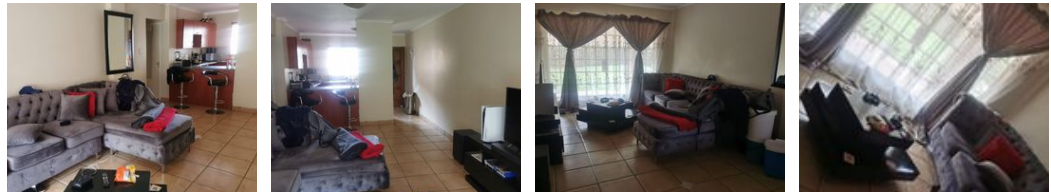
011 805 6316

Third Floor Office Block F
Hertford Office Park
90 Bekker Rd
Vorna Valley
Midrand



SOLE MANDATE

Web Ref RL26576



R600,000

Monthly Bond Repayment R6,193.13
Calculated over 20 years at 11% with no deposit.

Transfer Costs R21,217.00 **Bond Costs** R15,795.00

These calculations are only a guide. Please ask your conveyancer for exact calculations.

Monthly Levy R1,500 **Monthly Rates** R400

2 1

2 Bedroom Groundfloor unit for Sale

Looking for a ground floor unit for your family? This is it.

This is a neat and spacious ground floor 2 bedroom unit with a lounge, kitchen, a full bath room with both a shower and bath.

The unit is in a much sought-after estate of Stone Arch in Castle view. It is closer to amenities like hospital, Medical centres, Schools, Shopping Centres. It also provides easy access to major roads like the N17, N3, N12 or M2.

Book your viewing and allow us to help you achieve your dreams!

Features

Interior		Exterior		Sizes	
Bedrooms	2	Carports / Parkings	1	Floor Size	70m ²
Bathrooms	1	Security	Yes	Land Size	70m ²
Kitchens	1	Pool	Yes		
Recep. Rooms	2	Views	False		
Furnished	No				

Extras

Balcony Built-in Kitchen Appliances Built-in Wardrobes Covered Parking Security Shared Pool

