



Lindelwa Nkuna  
0814480683  
lindelwa@csisales.co.za

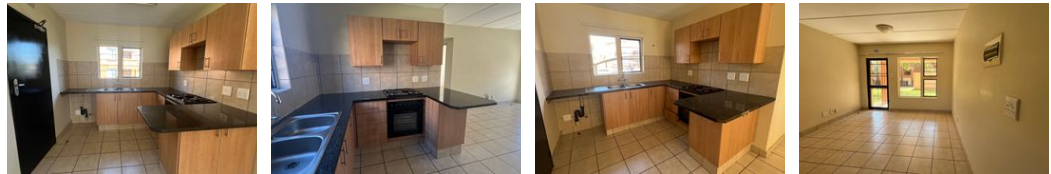
Contact Head Office

011 805 6316

Third Floor Office Block F  
Hertford Office Park  
90 Bekker Rd  
Vorna Valley  
Midrand



Web Ref RL232056



R760,000

2 Bedrooms 1 Bathroom

**Monthly Bond Repayment** R7,844.63  
Calculated over 20 years at 11% with no deposit.

**Transfer Costs** R25,898.00 **Bond Costs** R19,565.00

These calculations are only a guide. Please ask your conveyancer for exact calculations.

**Monthly Levy** R920 **Monthly Rates** R400

### 2 Bedroom Ground Floor Apartment

Spacious Ground Floor Apartment.

This unit has 2 bedrooms, 1 full bathroom, kitchen, and an open-plan living area.

The living room leads to the semi-enclosed patio and manicured lawn.

This modern property is well located near shopping centres, fuel stations, good schools, major routes, etc.

The Estate has good security, kids' playground, and braai facilities.

### Features

Interior		Exterior		Sizes	
Bedrooms	2	Carports / Parkings	1	Floor Size	56m <sup>2</sup>
Bathrooms	1	Security	Yes		
Kitchens	1	Pool	No		
Recep. Rooms	1	Views	False		
Furnished	No				

#### Extras

24 Hour Access 24 Hour Response Communal Braai Area Electric Fencing Garden Security Estate Creche

