

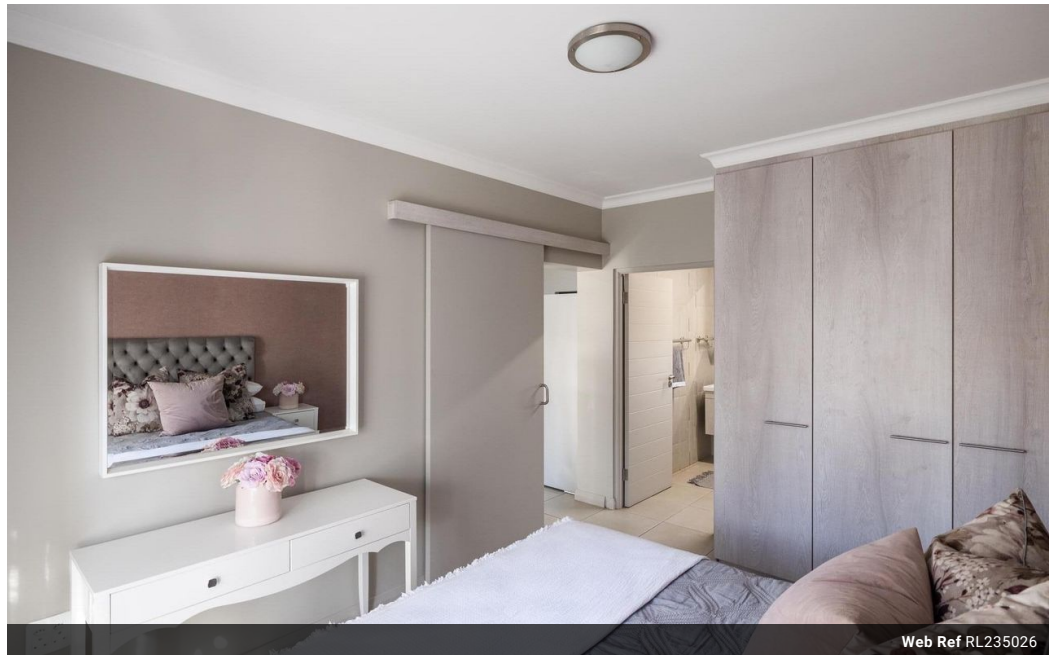


Marinda Buys
083 268 2880
marinda@csiproperties.co.za

Contact Head Office

011 805 6316

Third Floor Office Block F
Hertford Office Park
90 Bekker Rd
Vorna Valley
Midrand



Web Ref RL235026



R1,529,500

Monthly Bond Repayment R15,787.32
Calculated over 20 years at 11% with no deposit.

Transfer Costs R46,670.00 **Bond Costs** R28,990.00

These calculations are only a guide. Please ask your conveyancer for exact calculations.

Monthly Levy R3,076



1 BEDROOM APARTMENT FOR SALE IN WATERKLOOF MARINA RETIREMENT ESTATE

This 1 Bedroom unit situated above frail care, close to amenities. Perfect location!

Peace of mind:

Waterkloof Marina Retirement Estate not only offers retirees ample opportunity for a healthy lifestyle, but also the peace of mind of complete care and support services that are conveniently located on site. The retirement estate has an extensive lifestyle centre that is fully operational. This modern 24-hour care facility for frail residents also serve as a base from which to provide comprehensive home care services as well as 24-hour emergency support services.

The following facilities are housed in the service centre:-

- A modern and fully equipped 24 hour frail care centre
- Medical consultation room
- Dining hall
- Communal lounge
- Recreational hall
- Library
- Hair and beauty salon
- Convenience shop
- Post boxes for

Features

Interior

| | |
|--------------|----|
| Bedrooms | 1 |
| Bathrooms | 1 |
| Kitchens | 1 |
| Recep. Rooms | 12 |
| Furnished | No |

Exterior

| | |
|---------------------|------|
| Carports / Parkings | 1 |
| Security | Yes |
| Pool | Yes |
| Views | True |

Sizes

| | |
|------------|------------------|
| Floor Size | 50m ² |
|------------|------------------|

