



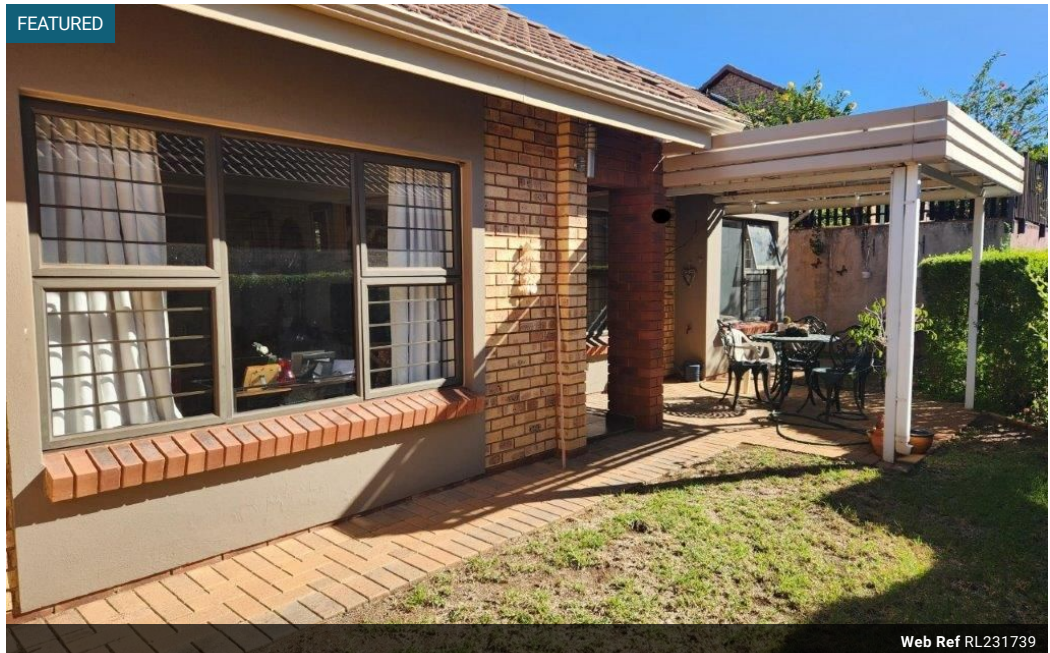
Ruan Erasmus
071 481 6199
ruan@csisales.co.za

Contact Head Office

011 805 6316

Third Floor Office Block F
Hertford Office Park
90 Bekker Rd
Vorna Valley
Midrand

FEATURED



Web Ref RL231739



R1,850,000

Monthly Bond Repayment R19,095.49
Calculated over 20 years at 11% with no deposit.

Transfer Costs R66,206.00 **Bond Costs** R32,760.00

These calculations are only a guide. Please ask your conveyancer for exact calculations.

Monthly Levy R3,200 **Monthly Rates** R1,000

🛏️ 3 🚿 2 🚗 1

3 Bedroom Simplex - Olivedale retirement village

3 bedrooms / 2 bathrooms / Single garage / Patio and garden / Good condition /

The service centre boasts a broad range of services and amenities.

These include:

- Hair salon
- Beauty salon
- Library
- Community hall(Church on Sunday's, dance classes, exercise classes, guest artists performing, music nights, movie nights, bingo, market days and many other activities)
- Restaurant
- Kiosk
- Bus service
- Cleaning service
- Laundry service
- Doctors rooms
- Frail care

Features

| Pets Allowed | | Exterior | | Sizes | |
|-----------------|-----|---------------------|-------|-------------------|-------------------|
| | Yes | | | | |
| Interior | | Exterior | | Floor Size | 107m ² |
| Bedrooms | 3 | Garages | 1 | | |
| Bathrooms | 2 | Carports / Parkings | 1 | | |
| Kitchens | 1 | Security | Yes | | |
| Recep. Rooms | 2 | Pool | Yes | | |
| Furnished | No | Views | False | | |

