



Ruan Erasmus
071 481 6199
ruan@csisales.co.za

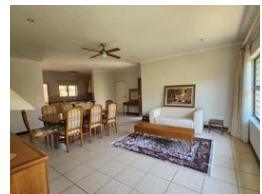
Contact Head Office

011 805 6316

Third Floor Office Block F
Hertford Office Park
90 Bekker Rd
Vorna Valley
Midrand



Web Ref RL235016



R2,995,000

3 Bedrooms 2 Bathrooms 2 Garages

Monthly Bond Repayment R30,914.04
Calculated over 20 years at 11% with no deposit.

Transfer Costs R159,661.00 **Bond Costs** R42,185.00
These calculations are only a guide. Please ask your conveyancer for exact calculations.

Monthly Levy R5,600 **Monthly Rates** R1,850

3 Bedroom Simplex - Olivedale retirement village

3 bedrooms / 2 bathrooms / Double garage / Covered patio / Inverter / Beautiful views / Excellent condition /

The service centre boasts a broad range of services and amenities.

These include:

- Hair salon
- Beauty salon
- Library
- Community hall(Dance classes, exercise classes, yoga, guest artists performing, market days, clothing markets, games, bingo, Church services and many other activities)
- Restaurant
- Pool
- Kiosk
- Bus service
- Cleaning service
- Laundry service
- Doctors rooms

Features

Pets Allowed	Yes				
Interior		Exterior		Sizes	
Bedrooms	3	Garages	2	Floor Size	145m ²
Bathrooms	2	Carports / Parkings	2		
Kitchens	1	Security	Yes		
Recep. Rooms	2	Pool	Yes		
Furnished	No	Views	True		

