

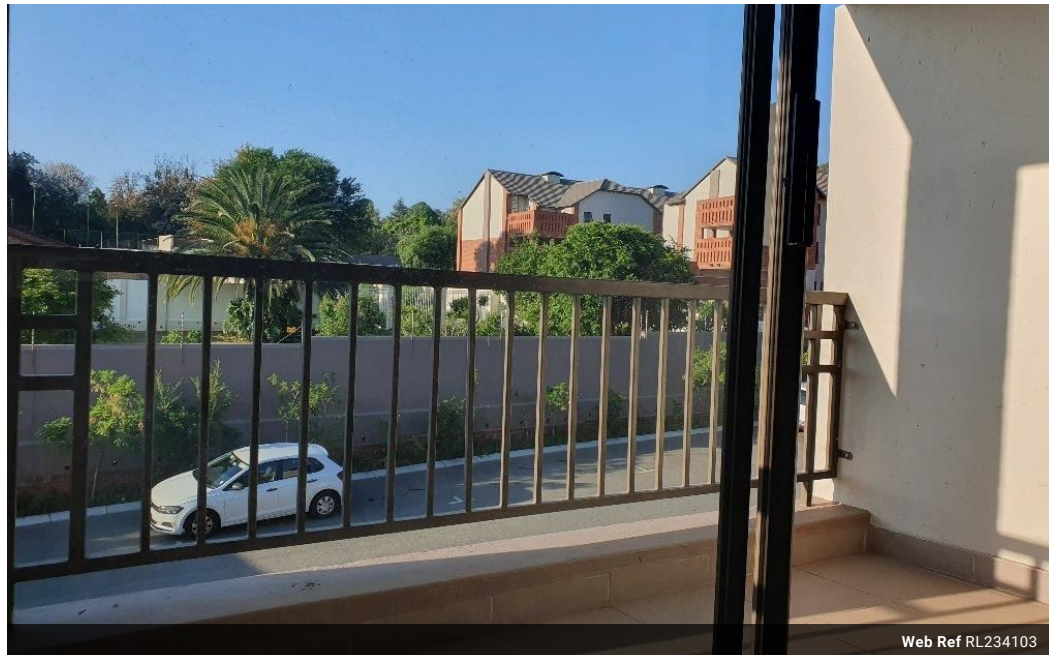


Ruan Erasmus
071 481 6199
ruan@csisales.co.za

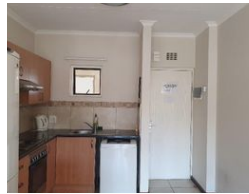
Contact Head Office

011 805 6316

Third Floor Office Block F
Hertford Office Park
90 Bekker Rd
Vorna Valley
Midrand



Web Ref RL234103



R850,000

Monthly Bond Repayment R8,773.60
Calculated over 20 years at 11% with no deposit.

Transfer Costs R28,244.00 **Bond Costs** R21,450.00

These calculations are only a guide. Please ask your conveyancer for exact calculations.

Monthly Levy R3,164.1 **Monthly Rates** R670



1 bedroom apartment - Douglasdale retirement village

1 bedroom / 1 bathroom / Kitchen and Living area / Balcony / Nice view / Excellent condition /

Easy access to the facilities.

The service centre boasts a broad range of services and amenities.

These include:

- Hair salon
- Beauty salon
- Library
- Community hall(Dance classes, Exercise classes and Pilates, Market days, Pub and Grub with guest artists performing, Live music, Wine tastings, Tea gardens, Fine dine evenings, Church on Sundays and many other activities)
- Restaurant
- Pool
- Kiosk
- Bus service
- Cleaning service

Features

Interior

Bedrooms	1
Bathrooms	1
Kitchens	1
Recep. Rooms	2
Furnished	No

Exterior

Carports / Parkings	1
Security	Yes
Pool	Yes
Views	True

Sizes

Floor Size	49m ²
------------	------------------

