



**Ruan Erasmus**  
071 481 6199  
ruan@csisales.co.za

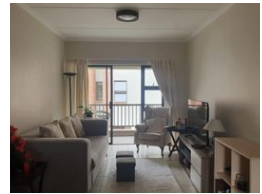
Contact Head Office

011 805 6316

Third Floor Office Block F  
Hertford Office Park  
90 Bekker Rd  
Vorna Valley  
Midrand



Web Ref RL234480



**R1,195,000**

**Monthly Bond Repayment** R12,334.65  
Calculated over 20 years at 11% with no deposit.

**Transfer Costs** R32,749.00    **Bond Costs** R25,220.00

These calculations are only a guide. Please ask your conveyancer for exact calculations.

**Monthly Levy** R3,804.0    **Monthly Rates** R997

2    1

2 bedroom apartment - Douglasdale retirement village

2 bedrooms / 1 bathroom / Renovated / Easy access Undercover carport / Balcony / Excellent condition /

The service centre boasts a broad range of services and amenities.

These include:

- Hair salon
- Beauty salon
- Library
- Community hall( Dance classes, Exercise classes, Pub&Grub, Fine dine evenings, Wine tastings, Market days, Live music, Party time and many other activities )
- Pool
- Restaurant
- Kiosk
- Bus service
- Cleaning service
- Laundry service
- Doctors rooms

Features

Interior		Exterior		Sizes	
Bedrooms	2	Carports / Parkings	1	Floor Size	65m <sup>2</sup>
Bathrooms	1	Security	Yes		
Kitchens	1	Pool	Yes		
Recep. Rooms	2	Views	True		
Furnished	No				

