

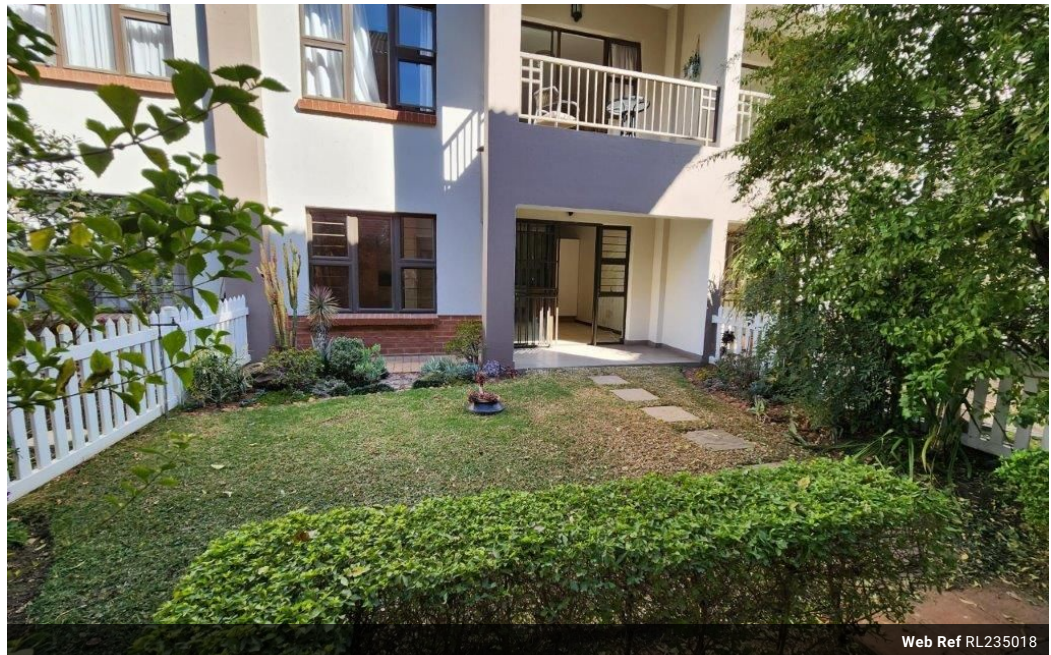


**Ruan Erasmus**  
071 481 6199  
ruan@csisales.co.za

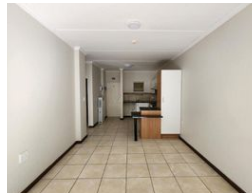
Contact Head Office

011 805 6316

Third Floor Office Block F  
Hertford Office Park  
90 Bekker Rd  
Vorna Valley  
Midrand



Web Ref RL235018



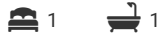
**R900,000**

**Monthly Bond Repayment** R9,289.70  
Calculated over 20 years at 11% with no deposit.

**Transfer Costs** R28,244.00    **Bond Costs** R21,450.00

These calculations are only a guide. Please ask your conveyancer for exact calculations.

**Monthly Levy** R3,210    **Monthly Rates** R826



Ground floor / 1 bedroom apartment / Douglasdale retirement village

1 bedroom / 1 bathroom / kitchen and living area / Patio / Inverter / Excellent condition /

Easy access to the facilities.

Parking close to unit.

The service centre boasts a broad range of services and amenities.

These include:

- Hair salon
- Beauty salon
- Library
- Community hall( Dance classes, Exercise classes and Pilates, Market days, Guest artists performing, Party time, Pub & Grub, Games, Bingo, Wine tastings, Fine dine evenings, Braai days, Church on Sundays and many other activities )
- Restaurant
- Pool
- Kiosk

### Features

<b>Pets Allowed</b>	Yes			
<b>Interior</b>		<b>Exterior</b>		<b>Sizes</b>
Bedrooms	1	Carports / Parkings	1	Floor Size
Bathrooms	1	Security	Yes	49m <sup>2</sup>
Kitchens	1	Pool	Yes	
Recep. Rooms	2	Views	False	
Furnished	No			

