



Gloria Koaho
073 432 3719
gloria@nepgroup.co.za



Calvin Mutimbanyoka
067 069 2327
calvin@nepgroup.co.za



Rachelle Laurens
060 039 6232

rachelle@nepgroup.co.za

Contact Head Office

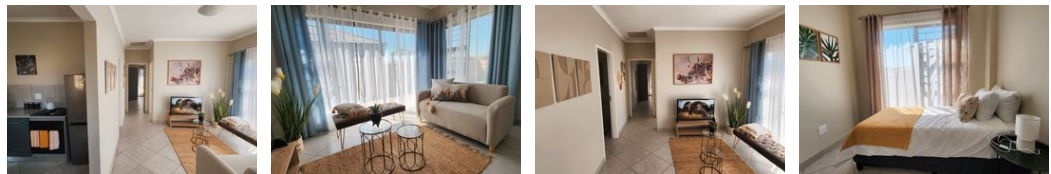
011 805 6316

Third Floor Office Block F
Hertford Office Park
90 Bekker Rd
Vorna Valley
Midrand



SOLE MANDATE

Web Ref RL232201



R935,000

Monthly Bond Repayment R9,650.96
Calculated over 20 years at 11% with no deposit.

Transfer Costs R30,412.00 **Bond Costs** R23,335.00

These calculations are only a guide. Please ask your conveyancer for exact calculations.



Brand new 2-bedroom house

Last Chance To Buy At 2024 Price - Chic Living at Royal Emfuleni Security Estate - 2 Bed, 2 Bath Delight!

Uncover stylish living at Royal Emfuleni Security Estate! Introducing our T-04 unit, a modern 2-bedroom, 2-bathroom home designed for comfort and sophistication. With a footprint of 60m² - full-title home and a private stand. Choose from a variety of luxury finishes and an open plan option.

In Royal Emfuleni Security Estate, you will be in a 24-hour secure environment. Included amenities are: - fibre ready connectivity – solar geysers – open parks – communal facilities – outdoor gym – kids' play area – soccer kick about and the option for load shedding solutions.

You can buy directly from the developer to save on bond and transfer costs. Making the proses easier for you. Elevate your lifestyle at Royal Emfuleni Security...

Features

| | | | | | |
|---------------------|-----|---------------------|-------|--------------|-------------------|
| Pets Allowed | Yes | | | | |
| Interior | | Exterior | | Sizes | |
| Bedrooms | 2 | Carports / Parkings | 1 | Floor Size | 60m ² |
| Bathrooms | 2 | Security | Yes | Land Size | 250m ² |
| Kitchens | 1 | Pool | No | | |
| Recep. Rooms | 1 | Views | False | | |
| Furnished | No | | | | |

Extras

Security Estate Fibre Communal Braai Area Solar Geyser Gated Community Bath, Toilet and Basin Burglar Bars Carport Driveway Electric Fencing Estate Garden Landscaped Security Gate

