



Precious Mashishi
066 305 2368
precious@csirentals.co.za

Contact Head Office

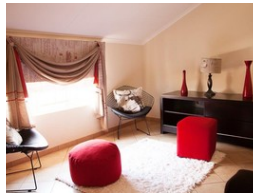
011 805 6316

Third Floor Office Block F
Hertford Office Park
90 Bekker Rd
Vorna Valley
Midrand

RENTED



Web Ref RL8040



R8,000 pm

Lease Period 6 months
Annual Escalation -

Availability Immediately

Deposit R8,000

3 3

Immediate Occupation for a 3bedroom house for Rental

PLATINUM MANOR ESTATE Situated in 01Clive Street ,Chantelle. The most affordable 3 bedroom house in Pretoria. Built with a beautiful red face brick with modern finishes. Product - 3bedroom House - Built-in wardrobes in all the bedrooms - Kitchen units with granite tops - Double Garage Savings - Prepaid water and electricity - Energy solar geysers Security - 24hr security access control - Electric Fence - Armed response Amenities - Close to amenities and private routes - Bus stop to Pretoria CBD - Public transport route in front of the complex - 15 Minutes from Centurion - 15minutes from PTA CBD - 10 Minutes to Tshwane University of Technology - 5 Minutes to Wonderpark Mall - 2 kilometres away from Akasia Hospital LIMITED UNITS AVAILABLE! - Call NOW to book an appointment for viewing with Precious 066 305 2368

Features

Interior

Bedrooms 3
Bathrooms 3
Furnished No

Exterior

Pool No

