

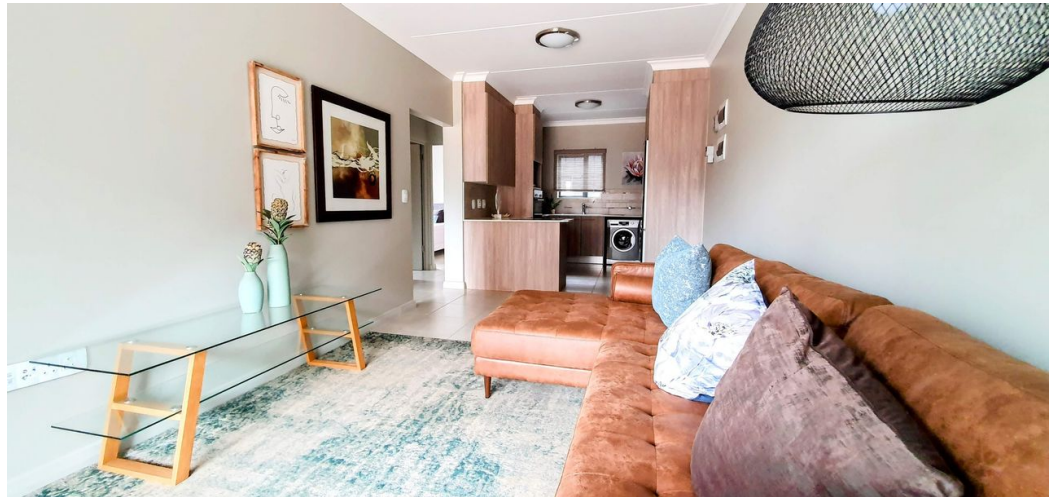


Riandi Visagie
0798735171
riandi@csiproperties.co.za

Contact Head Office

011 805 6316

Third Floor Office Block F
Hertford Office Park
90 Bekker Rd
Vorna Valley
Midrand



Web Ref RL234952



R12,270 pm

Monthly Levy R1,160 Monthly Rates R1 Sectional Title Levy R1
Special Levy R1 Lease Period 12 months Availability Immediately Deposit -
Annual Escalation -

2 1

TWO BEDROOM APARTMENT TO RENT IN WATERKLOOF MARINA RETIREMENT ESTATE

WATERKLOOF MARINA RETIREMENT ESTATE

Modern 2-bedroom apartment:

Two bedrooms with built-in cupboards

One bathroom with a shower, toilet, and wash basin

Open plan kitchen, living and dining area, with a sliding door to the balcony and garden

The kitchen boasts plentiful cupboards and has space and connections for a washing machine, dishwasher, and a single-door fridge. It features a beautiful Quartz countertop, as well as a stovetop and oven.

The apartment is conveniently located close to the lifestyle center that features a restaurant and a coffee shop.

Solar geyser and prepaid electricity.

Elevators provide easy access and are always operational.

Panic button for medical and security emergencies

1 Carport

Long-term lease available

Waterkloof Marina Retirement Estate is a luxury retirement estate in Waterkloof Ridge where you...

Features

Interior

Bedrooms	2
Bathrooms	1
Kitchens	1
Recep. Rooms	2
Furnished	No

Exterior

Carports / Parkings	1
Security	Yes
Pool	Yes
Views	True

Sizes

Floor Size	70m ²
------------	------------------

Extras

24 Hour Access 24 Hour Response

