



Riandi Visagie
0798735171
riandi@csiproperties.co.za

Contact Head Office

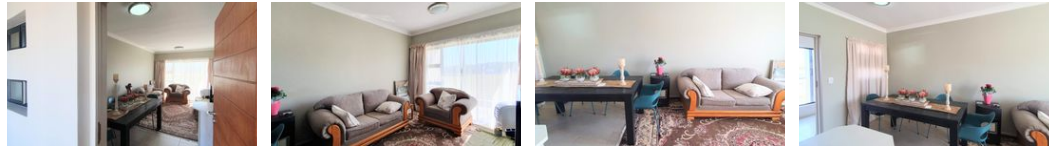
011 805 6316

Third Floor Office Block F
Hertford Office Park
90 Bekker Rd
Vorna Valley
Midrand

NEW



Web Ref RL235072



R13,000 pm

Monthly Levy R1,160 Monthly Rates R1 Sectional Title Levy R1
Special Levy R1 Lease Period 12 months Availability 01 May 2025 Deposit -
Annual Escalation -

🛏️ 2 🚿 1

WATERKLOOF MARINA RETIREMENT ESTATE

WATERKLOOF MARINA RETIREMENT ESTATE

Luxurious Two-Bedroom Apartment

Apartment Features:

Two north-facing bedrooms with built-in cupboards
One bathroom with shower, toilet, and washbasin
Spacious open-concept living and dining area
Kitchen equipped with a stove, oven, and space for a washing machine and fridge
Additional space for a washing machine in a built-in cupboard in the passage, providing extra storage too
Ample kitchen storage, including vegetable drawers
Balcony accessible from the living area via a sliding door, stunning unlimited view
Parking : carport for 1 vehicle near entrance to apartments

Additional Features:

Solar geyser
Prepaid electricity
Panic button

Features

Interior

Bedrooms 2
Bathrooms 1
Kitchens 1
Recep. Rooms 2
Furnished No

Exterior

Carports / Parkings 1
Security Yes
Pool Yes
Views True

Sizes

Floor Size 68m²

Extras

24 Hour Access 24 Hour Response

