



**Kyle van Staden**  
0662112483  
kyle@csiproperties.co.za

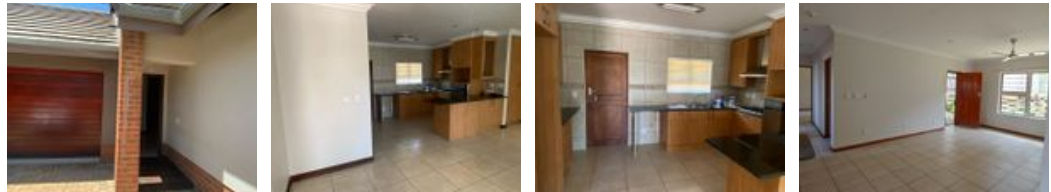
Contact Head Office

011 805 6316

Third Floor Office Block F  
Hertford Office Park  
90 Bekker Rd  
Vorna Valley  
Midrand



Web Ref RL234724



R21,000 pm

Lease Period Negotiable    Availability 01 Apr 2025    Deposit -  
Annual Escalation -

🛏️ 3    🚿 2    🚗 2

### Simplex unit to Rent in Douglasdale Retirement Village

DOUGLASDALE RETIREMENT VILLAGE!!

Available now are the following:

- 3 Bedroom Simplex starting at R21,000.00 per month

Village Features:

- Elevators in all apartment Blocks
- Safe - 24 Hour Security and Access Control
- Satisfying - Dining room with fully-equipped industrial kitchen open daily
- Self - Hair & Beauty salon
- Doctor's consulting room
- Laundry Service
- Shuttle Service
- Fully equipped frail care facility / and mid care facility
- Excellent gardening and cleaning team keeping the complex neat and tidy at all times

Unit Features:

### Features

Pets Allowed		Exterior		Sizes	
	Yes				
<b>Interior</b>		<b>Garages</b>	2	<b>Floor Size</b>	125m <sup>2</sup>
Bedrooms	3	<b>Carports / Parkings</b>	1		
Bathrooms	2	<b>Security</b>	Yes		
Kitchens	1	<b>Pool</b>	Yes		
Recep. Rooms	2	<b>Views</b>	True		
Studies	1				
Furnished	No				

### Extras

24 Hour Access 24 Hour Response Garden Electric Garage Patio Built In Braai Dam View

